

Chifley Tower



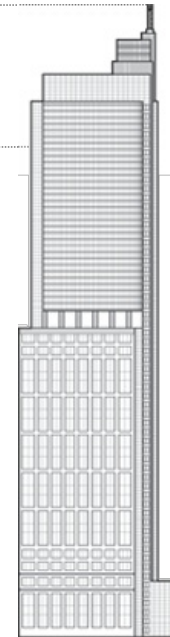
Click an image to view larger version.



Height: To Tip
244.1 m / 801 ft

Height:
Architectural
244 m / 801 ft

Height: Occupied
189 m / 620 ft



Floors Above Ground
50

Floors Below Ground
4

of Elevators
26

Tower GFA
90,000 m² / 968,752 ft²

Facts

Official Name	Chifley Tower
Structure Type	Building
Status	COM
Country	Australia
City	Sydney
Street Address & Map	2 Chifley Square
Postal Code	2000
Building Function	office
Structural Material	steel
Energy Label	4.5 Star NABERS Energy Rating
Construction Start	1988
Completion	1992
Retrofit Start	2008
Retrofit End	2014

Original Companies Involved

Owner	
• Current	Reco Bathurst Pty Ltd
Developer	Bond Corporation; Kumagai Gumi
Architect	
• Design	Kohn Pedersen Fox Associates
Structural Engineer	
• Design	WSP Flack + Kurtz
Main Contractor	Multiplex Construction
Other Consultant	
• Property Management	JLL
• Wind	CPP Wind Engineering and Air Quality Consultants

Retrofit Companies Involved

Structural Engineer	
• Design	D'Ambrosio Consulting Pty Ltd
MEP Engineer	
• Design	GWA Consultants
Project Manager	Crown Project Services; JLL
Other Consultant	
• Building Monitoring	Honeywell
• Fire	Harris Page and Associates
• Quantity Surveyor	Rider Levett Bucknall

CTBUH Initiatives

Warm Weather Spaces Walking Tours 2015
17 Sep 2015 – Tour Report

Videos

2015 Awards - Session 2 Q&A
12 Nov 2015 – Chair: Douglas Mass, Cosentini Associates

Interview: Chifley Tower
12 Nov 2015 – Michael George, JLL

Managing Performance Through Incremental Improvements: Chifley Tower, Sydney
12 Nov 2015 – Michael George, JLL

[More Videos](#) →

CTBUH Awards

Performance Award 2015 Winner

CTBUH Awards 2015

To submit more information or donate images for this project, please use our [submission portal](#).