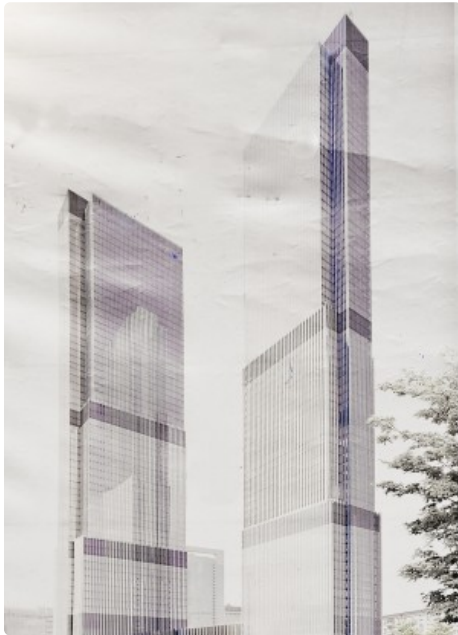


This PDF was downloaded from The Skyscraper Center on 2020/04/08 UTC
For the most up to date version, please visit <https://skyscrapercenter.com>

NEVA TOWERS 2



Click an image to view larger version.

Figures

Height: Architectural	345 m / 1,132 ft
Height: To Tip	345 m / 1,132 ft
Floors Above Ground	79
Floors Below Ground	4
Top Elevator Speed	8 m/s
# of Apartments	814
# of Parking Spaces	2,040

Facts

Official Name	NEVA TOWERS 2
Name of Complex	NEVA TOWERS
Other Names	Renaissance Towers 2
Structure Type	Building
Status	COM
Country	Russia
City	Moscow
Street Address & Map	Perviy Krasnogvardeiskii Lane
Postal Code	123317
Building Function	residential
Structural Material	concrete
Proposed	2006
Construction Start	2013
Completion	2020
Official Website	NEVA TOWERS

Companies Involved

Developer	Renaissance Development
Architect	<ul style="list-style-type: none">• Design FXFWOLE; SPEECH; HOK, Inc.
Structural Engineer	<ul style="list-style-type: none">• Design Halvorson and Partners
MEP Engineer	<ul style="list-style-type: none">• Design Metropolis
Main Contractor	Renaissance Construction Company
Material Supplier	<ul style="list-style-type: none">• Cladding Metal Yapi• Elevator KONE• Sealants Sika Services AG

Research Papers

[Plot 17-18 Project: Tall Building Design in "Moscow City"](#)
17 Oct 2016 – Cities to Megacities: Shaping Dense Vertical Urbanism

To submit more information or donate images for this project, please use our [submission portal](#).